

E-PSB

A Product Support Bulletin From Service Engineering



Subject Area:

New Parts Manual Correction
Part Chart Service Information
Look-Up Tip

Issue #	C14008
Level:	B
Issue Date:	5/29/2014
Expiration Date:	11/29/2014

Model Category:

IC Electric Narrow Aisle

Model (s)

Serial Numbers

Subject:

Adjust factory settings prior to pre-delivery inspection.

Cause:

Factory engine RPM setting and the system hydraulic relief pressure may not be optimum for proper operation. When the hydraulic system is deadheaded the engine may stall at idle.

Parts Required: None

Tools Required:

Perkins EST Software, Laptop, Engine Communication Adapter, 12mm and 14mm wrenches, 4mm and 5mm hex wrenches, hydraulic pressure gauge up to 4000psi, butane torch, and the tools required to install gauge.

Warranty Info:

File a "PSB" claim in iWarranty using PSB code: C14008.

Solution:

Increase the engine idle RPM from 800 to 950 and lower the hydraulic system relief pressure from 2900psi to 2700psi at Wide Open Throttle (WOT). Please follow the two procedures to make adjustments.

E-PSB

A Product Support Bulletin From Service Engineering



*Refer to Service Manual and Operation and Maintenance Manual (OMM) for safety guidelines prior to working on equipment.

*Make all repairs with the lift truck parked on a level, hard surface. Block the lift truck so it does not roll while working on or under the lift truck.

*Ensure enforcement of company policy for proper lockout/tag out procedure.

*Do not operate this truck unless you have read and understood the instructions in the OMM. Improper truck operation is dangerous and could result in injury or death.

* Please follow all safety guidelines when using an open flame near flammables. Remove any hydraulic fluid on top or near test port area. Ensure a fire extinguisher is within arm's reach.

E-PSB

A Product Support Bulletin From Service Engineering



Solution:

Procedure 1: Adjust Engine Idle RPM Setting.

1. Connect the communications adapter and laptop to the truck.



E-PSB

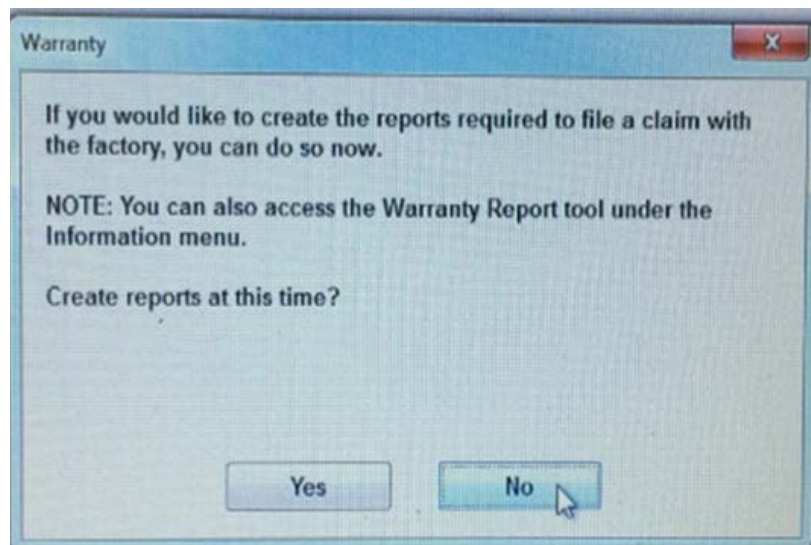
A Product Support Bulletin From Service Engineering



2. Open the Perkins EST Software.



3. When the Warranty window appears click NO.

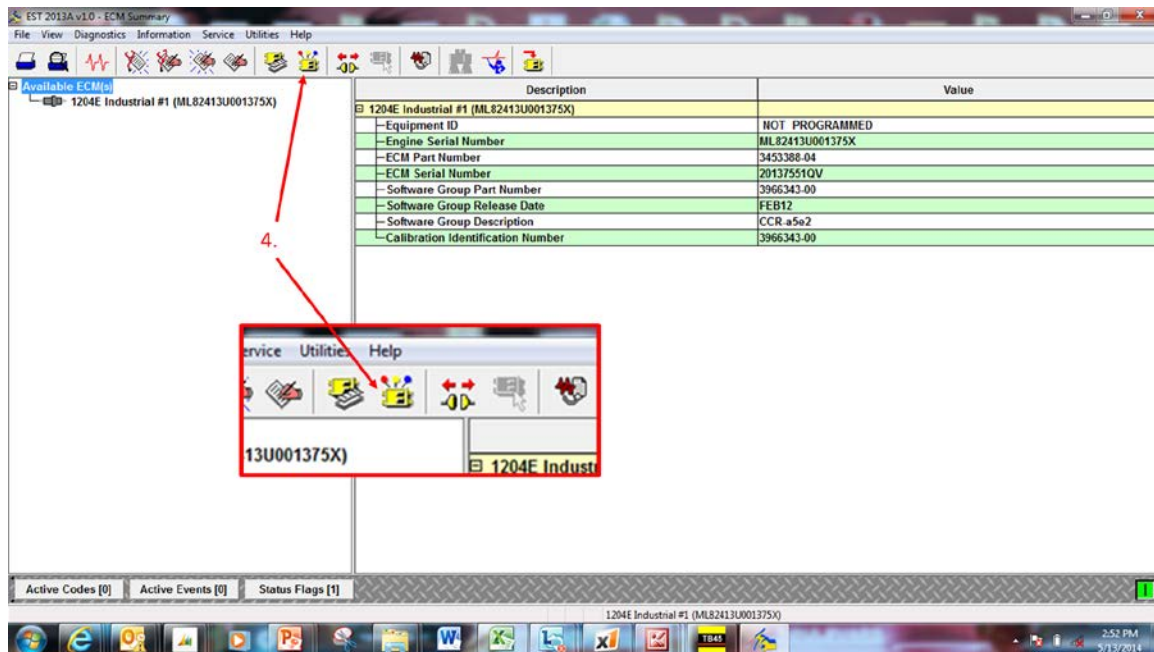


E-PSB

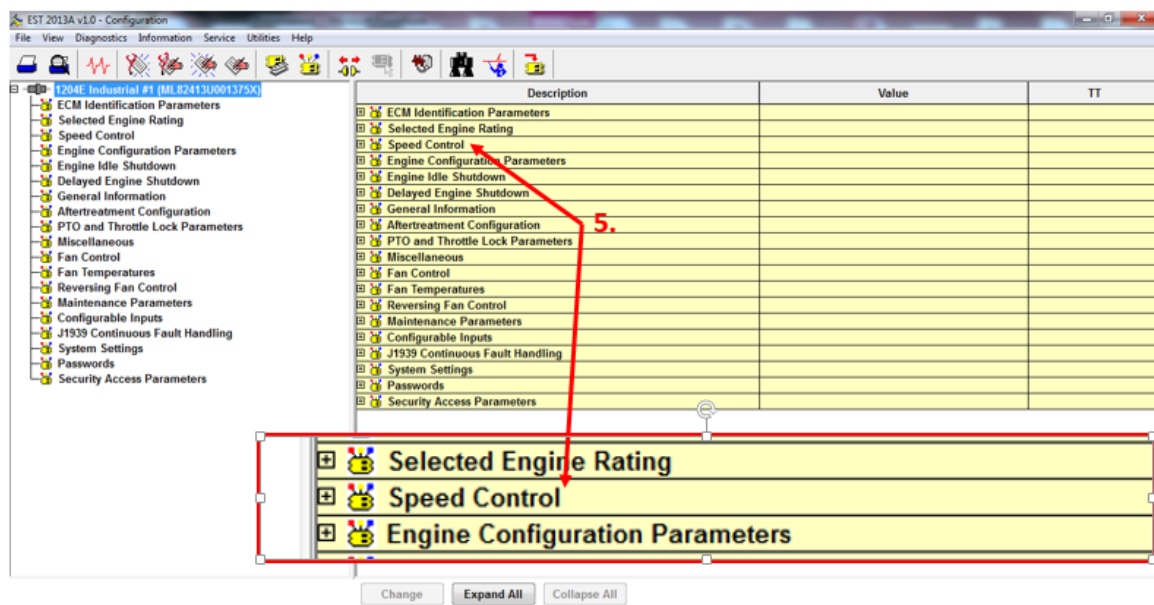
A Product Support Bulletin From Service Engineering



4. On the Toolbar click on Configurations.



5. On the configuration dashboard, click to expand "Speed Control".

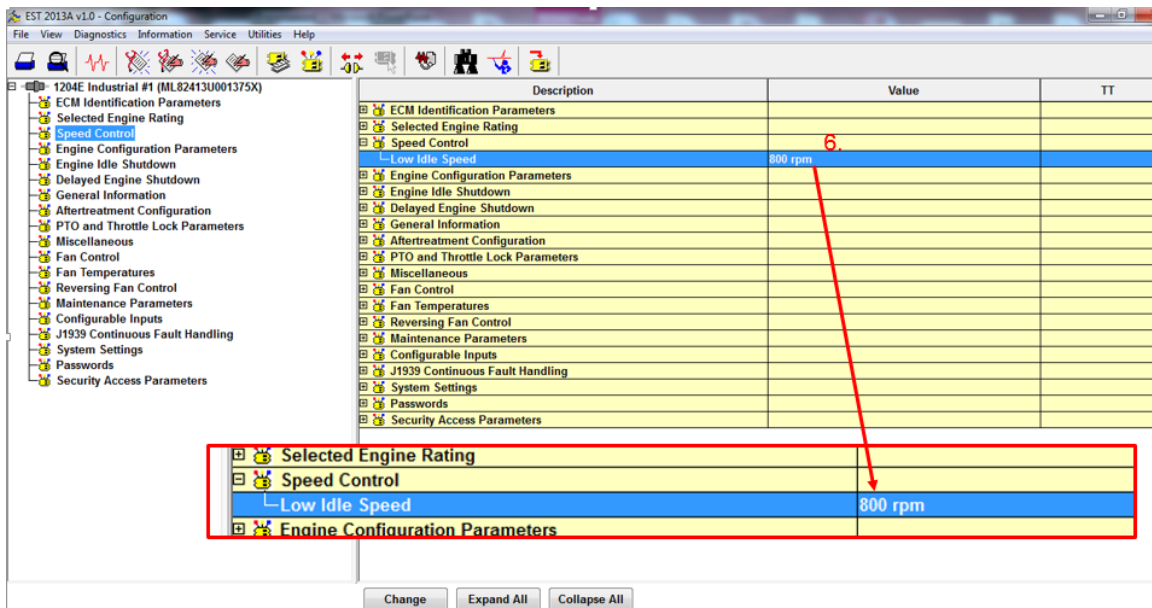


E-PSB

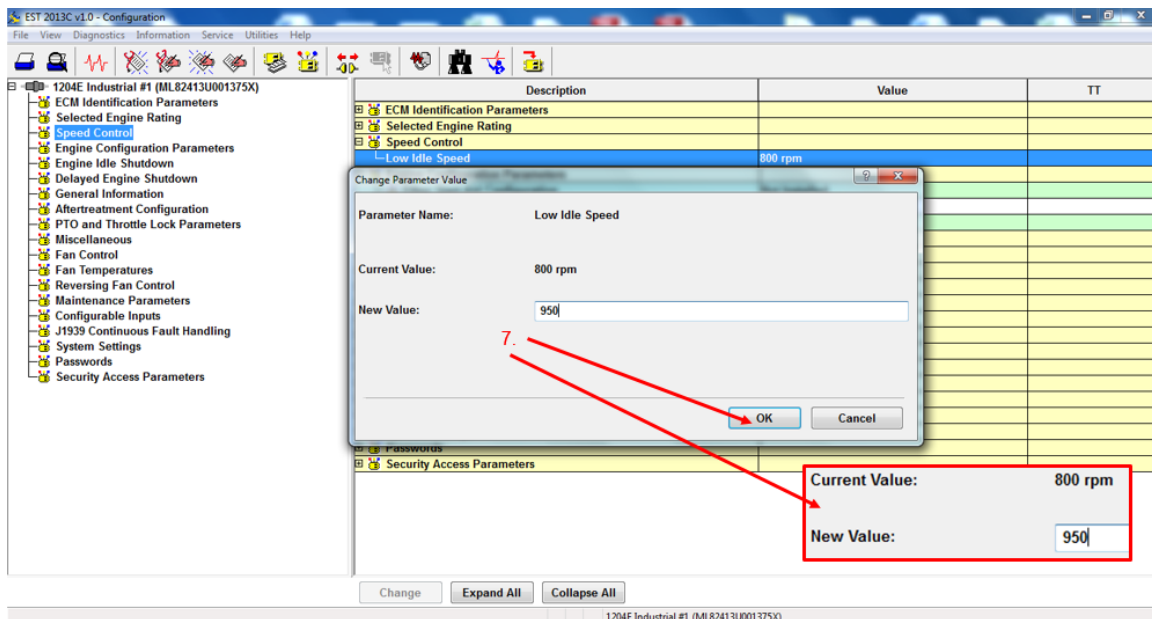
A Product Support Bulletin From Service Engineering



6. Find the Low Idle Speed Value of 800 and Double Click the value.



7. Input **950** in the New Value Box and click OK.

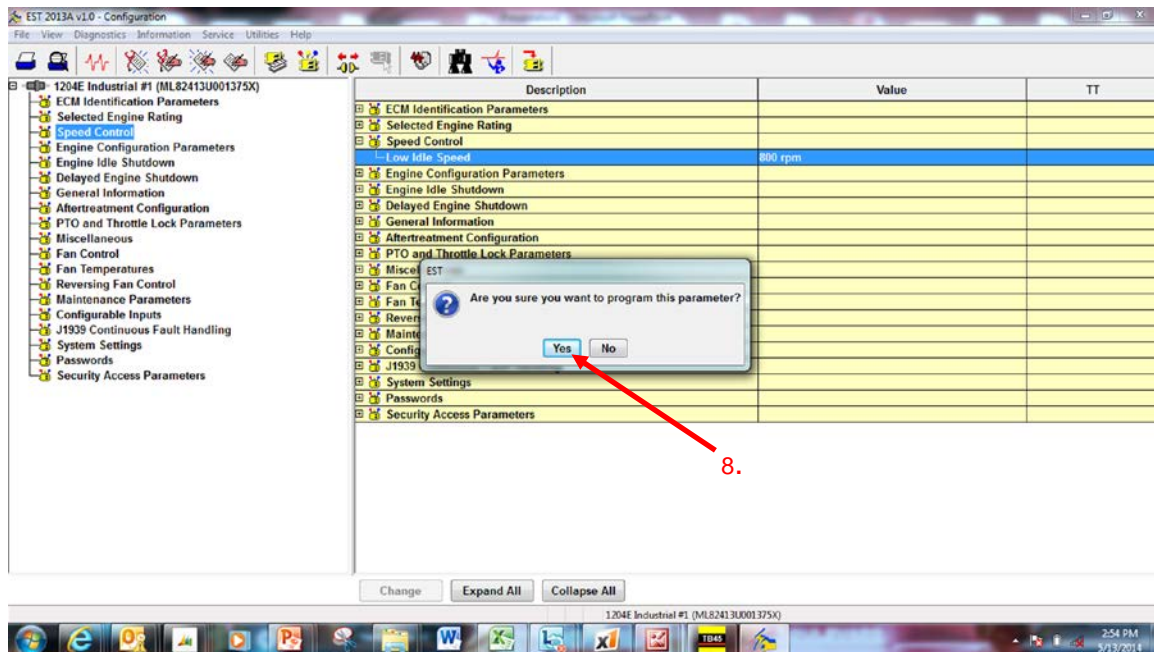


E-PSB

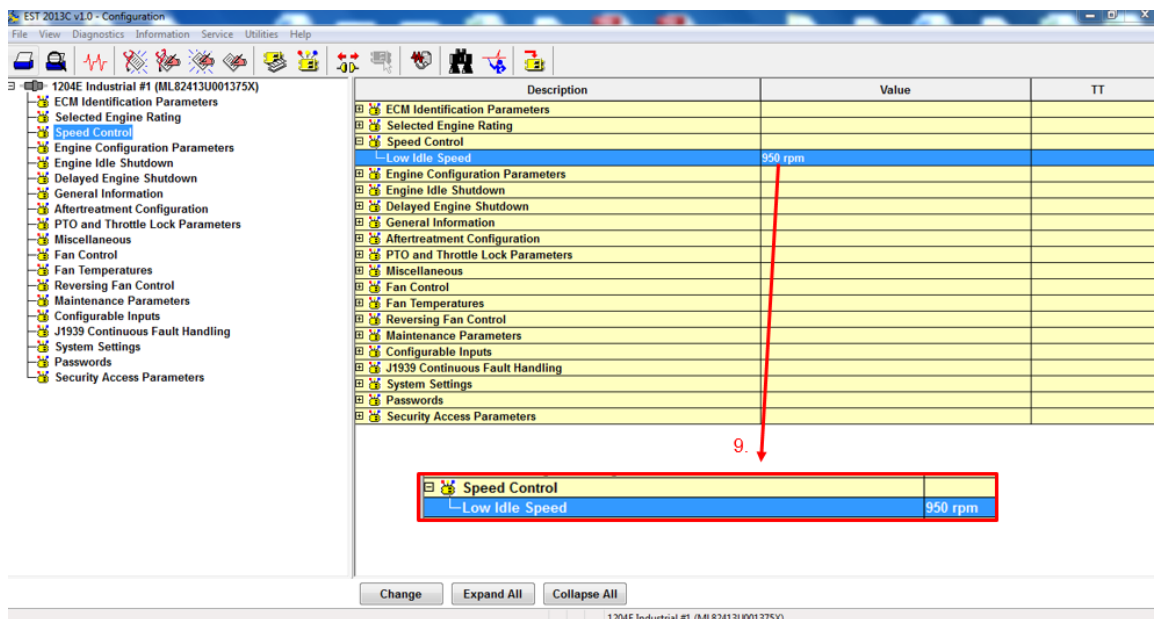
A Product Support Bulletin From Service Engineering



8. EST will ask you to confirm your new programming...click Yes.



9. The dashboard will now reflect the new RPM value of 950.



E-PSB

A Product Support Bulletin From Service Engineering



Solution:

Procedure 2: Adjust hydraulic main relief pressure to 2700psi.

1. Use a 14mm wrench to remove the hydraulic control valve access cover (6 bolts).



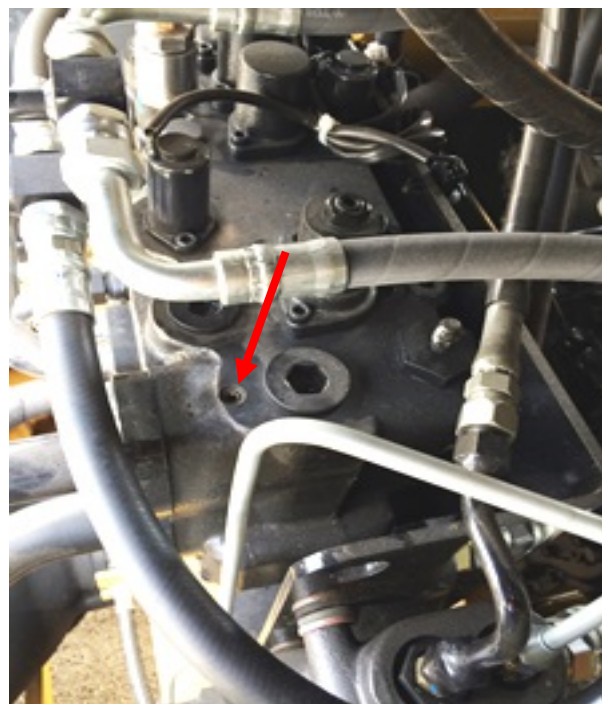
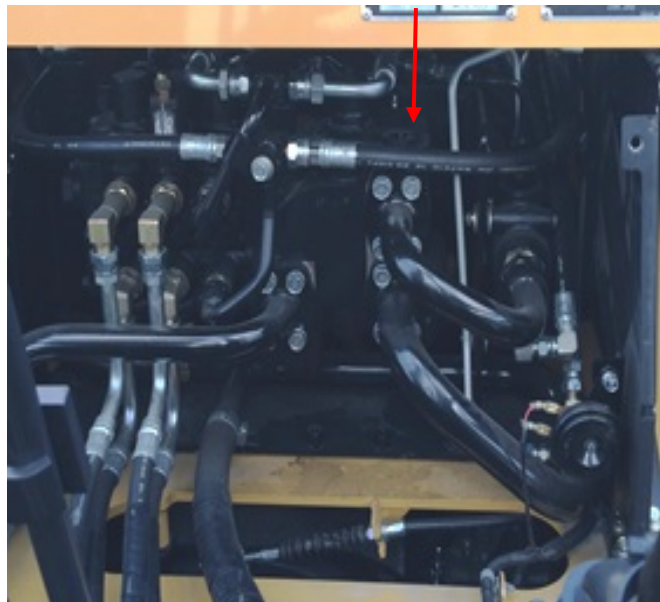
E-PSB

A Product Support Bulletin From Service Engineering



2. Locate the test port on the hydraulic control valve. Apply heat to test port plug to melt/loosen the thread locking compound (at least 400°F).

***Note:** Please follow all safety guidelines when using an open flame near flammables. Ensure a fire extinguisher is within arm's reach.*

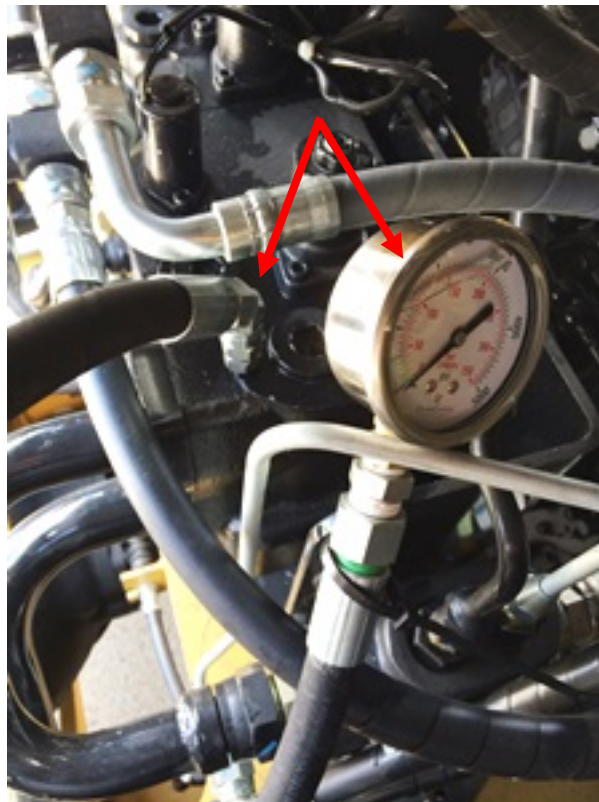


E-PSB

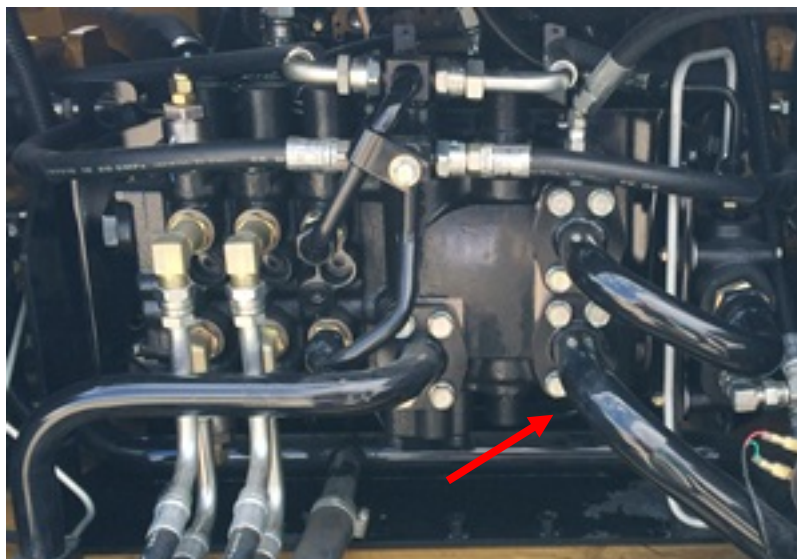
A Product Support Bulletin From Service Engineering



3. Use the 5mm hex key to remove test port plug and install 4000psi hydraulic pressure guage.

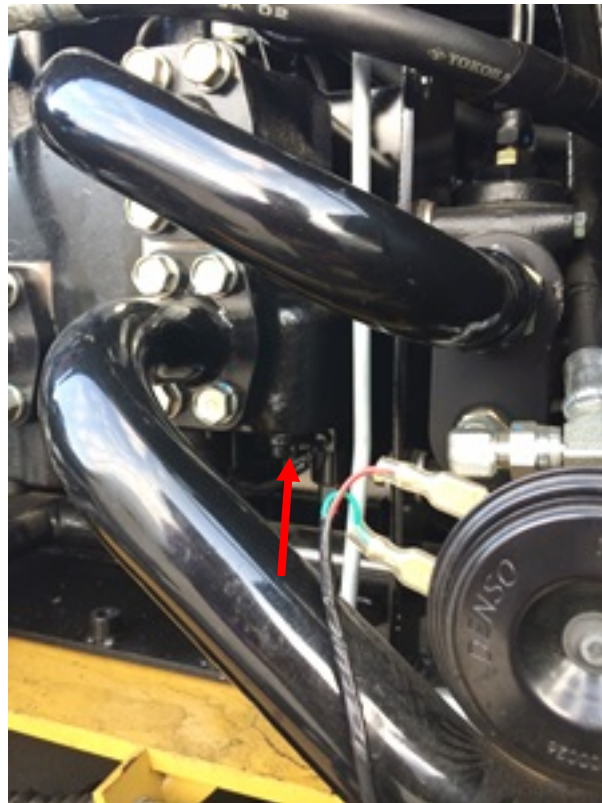


4. Locate the main relief pressure valve.

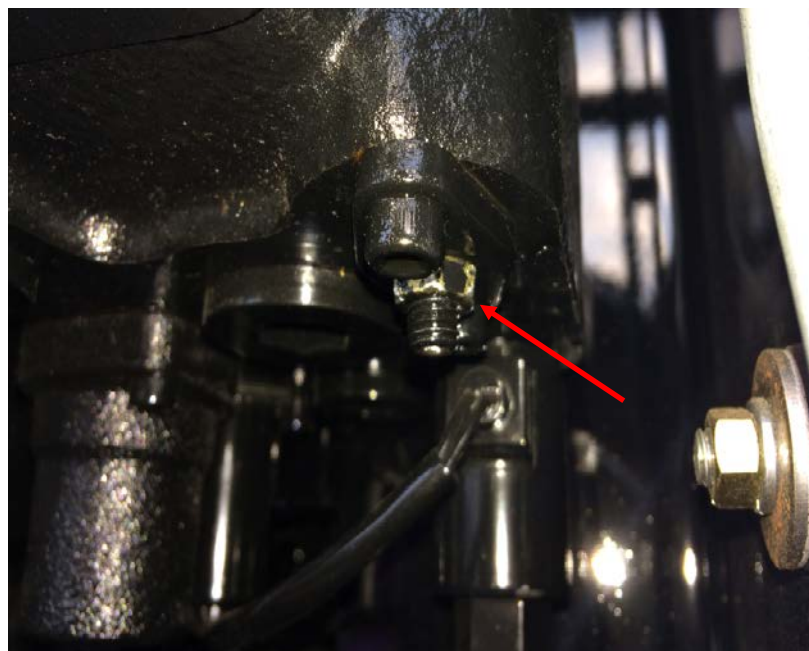


E-PSB

A Product Support Bulletin From Service Engineering



5. Using the 12mm wrench, loosen the lock nut.

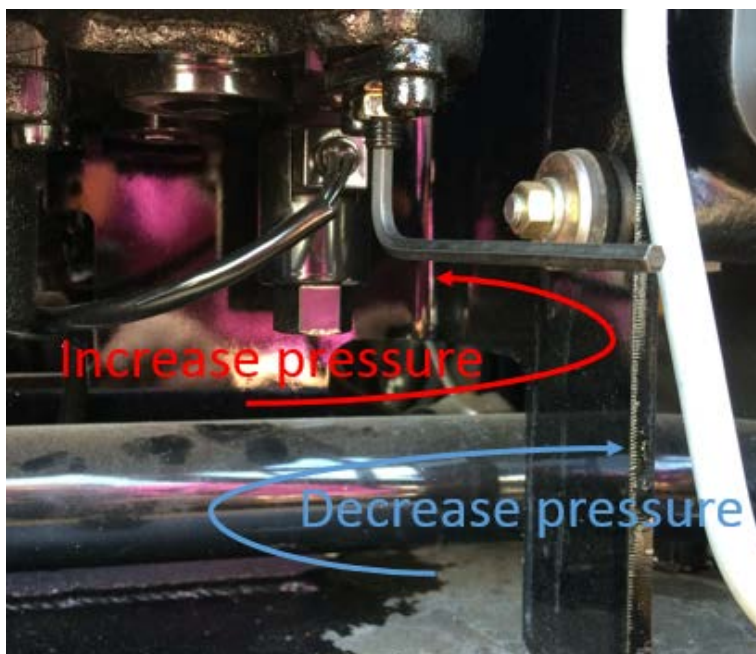


E-PSB

A Product Support Bulletin From Service Engineering



6. Use the 4mm hex key to adjust the main relief pressure.



7. Set the main relief pressure to 2700psi. Check the pressure at 100% throttle (WOT) at full back tilt.



E-PSB

A Product Support Bulletin From Service Engineering



8. Tighten the lock nut, remove pressure gauge, reinstall test port plug and the access cover.

Questions?

If you have any questions regarding this PSB, please contact Lift Central at (877) 228-3675.